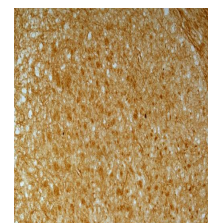


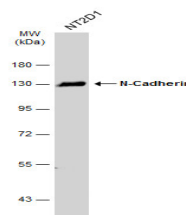
Product Datasheet

N-Cadherin antibody GRP68

Description	This gene is a classical cadherin from the cadherin superfamily. The encoded protein is a calcium dependent cell-cell adhesion glycoprotein comprised of five extracellular cadherin repeats, a transmembrane region and a highly conserved cytoplasmic tail. The protein functions during gastrulation and is required for establishment of left-right asymmetry. At certain central nervous system synapses, presynaptic to postsynaptic adhesion is mediated at least in part by this gene product. [provided by RefSeq]
Species/Host	Rabbit
Reactivity	Human, Mouse, Rat
Conjugation	Unconjugated
Tested Applications	ICC, IF, IHC-Fr, IHC-P, WB
Immunogen	Carrier-protein conjugated synthetic peptide encompassing a sequence within the C-terminus region of human N-Cadherin. The exact sequence is proprietary.
Form/Appearance	Liquid: 1XPBS, 1% BSA, 20% Glycerol (pH7). 0.025% ProClin 300 was added as a preservative.
Concentration	0.48 mg/ml
Storage	Store as concentrated solution. Centrifuge briefly prior to opening. For short-term storage (1-2 weeks), store at 4°C. For long-term storage, aliquot and store at -20°C or below. Avoid multiple freeze-thaw cycles.
Note	For research use only.
Isotype	IgG
Clonality	Polyclonal
Purity	Purified by antigen-affinity chromatography.
Uniprot ID	P19022
Entrez	1000
Dilution Range	WB: 1:500-1:3000, ICC: 1:100-1:1000, IHC-P: 1:100-1:1000, IHC-Fr: 1:100-1:1000



N-Cadherin antibody detects N-Cadherin protein on embryonic mouse brain by immunohistochemical analysis.
Sample: Frozen section of embryonic mouse brain (mE18.5). N-Cadherin antibody (GRP520) diluted at 1:500.



Whole cell extract (30 µg) was separated by 7.5% SDS-PAGE, and the membrane was blotted with N-Cadherin antibody (GRP520) diluted at 1:1000. The HRP-conjugated anti-rabbit IgG antibody was used to detect the primary antibody.