

Product Datasheet

HUMAN IgG F(ab')₂ (RABBIT) Antibody (Min X MOUSE Serum Proteins) GRP4587

Description Anti-HUMAN IgG F(ab')₂ (RABBIT) Antibody (Min X MOUSE Serum Proteins)

Species/Host Rabbit

Conjugation Unconjugated

Tested Applications ELISA, IHC-P, WB

Form/Appearance 0.02 M Potassium Phosphate, 0.15 M Sodium Chloride, pH 7.2

Concentration 2.0mg/mL

Note For research use only.

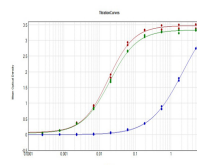
Isotype IgG

Clonality Polyclonal

Source Anti-Human IgG F(ab')₂ fragment was produced in rabbit by repeated immunization with human IgG F(ab')₂ fragment.

Dilution Range ELISA: 1:350,000, Immunochemistry: 1:1,000 - 1:5,000, Western Blot: 1:3,000 - 1:15,000

Application Notes Anti-Human IgG F(ab')₂ antibody is suitable for western blotting, IHC and for ELISA. Researchers should determine optimal titers for applications that are not stated below.



ELISA Results of Rabbit Anti-Human IgG F(ab')₂ Antibody