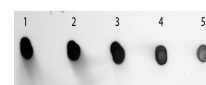


## Product Datasheet

# HUMAN IgG (H&L) (SHEEP) Antibody Alkaline Phosphatase Conjugated GRP4633

<b>Description</b>	Anti-HUMAN IgG (H&L) (SHEEP) Antibody Alkaline Phosphatase Conjugated
<b>Species/Host</b>	Sheep
<b>Reactivity</b>	Human
<b>Conjugation</b>	AP
<b>Tested Applications</b>	ELISA, IHC-P, WB
<b>Form/Appearance</b>	0.05 M Tris Chloride, 0.15M Sodium Chloride, 0.001M Magnesium Chloride, 0.0001M Zinc Chloride, 50% (v/v) Glycerol; pH 8.0
<b>Concentration</b>	1.0 mg/mL
<b>Storage</b>	Store vial at 4 °C before opening. DO NOT FREEZE. This product is stable at 4 °C as an undiluted liquid. Dilute only prior to immediate use. Freezing alkaline phosphatase conjugates will result in a substantial loss of enzymatic activity.
<b>Note</b>	For research use only.
<b>Isotype</b>	IgG
<b>Clonality</b>	Polyclonal
<b>Source</b>	Human IgG whole molecule
<b>Dilution Range</b>	ELISA: 1:2,000 - 1:10,000, Immunochemistry: 1:200 - 1:1,000, Western Blot: 1:500 - 1:2,500



Human IgG Antibody  
Alkaline  
Phosphatase Conjugated -  
Dot  
Blot

**Application Notes** Anti-HUMAN IgG (H&L) (SHEEP) Antibody is suitable for immunoblotting (western or dot blot), ELISA, immunoperoxidase electron microscopy and immunohistochemistry as well as other peroxidase-antibody based enzymatic assays requiring lot-to-lot consistency.