

Product Datasheet

Twist1/2 antibody GRP66

Description

This gene encodes a basic helix-loop-helix (bHLH) transcription factor that plays an important role in embryonic development. The encoded protein forms both homodimers and heterodimers that bind to DNA E box sequences and regulate the transcription of genes involved in cranial suture closure during skull development. This protein may also regulate neural tube closure, limb development and brown fat metabolism. This gene is hypermethylated and overexpressed in multiple human cancers, and the encoded protein promotes tumor cell invasion and metastasis. Mutations in this gene cause Saethre-Chotzen syndrome in human patients, which is characterized by craniosynostosis, ptosis and hypertelorism. [provided by RefSeq, Aug 2017]

Species/Host

Rabbit

Reactivity

Human, Mouse, Rat, Drosophila

Conjugation

Unconjugated

Tested Applications

IHC-P, WB

Immunogen

Recombinant protein encompassing a sequence within the center region of human Twist1/2. The exact sequence is proprietary.

Form/Appearance

Liquid: 1XPBS, 20% Glycerol (pH7). 0.01% Thimerosal was added as a preservative.

Concentration

1 mg/ml

Storage

Store as concentrated solution. Centrifuge briefly prior to opening vial. For short-term storage (1-2 weeks), store at 4°C. For long-term storage, aliquot and store at -20°C or below. Avoid multiple freeze-thaw cycles.

Note

For research use only.

Isotype

IgG

Clonality

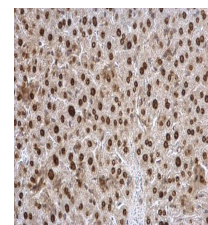
Polyclonal

Purity

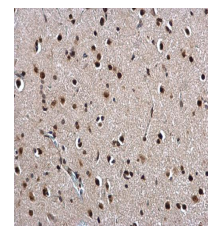
Purified by antigen-affinity chromatography.

Dilution Range

WB: 1:500-1:10000, IHC-P: 1:100-1:1000



Twist1/2 antibody detects Twist1/2 protein at nucleus on mouse liver by immunohistochemical analysis.
Sample: Paraffin-embedded mouse liver. Twist1/2 antibody (GRP518) dilution: 1:500.



Twist1/2 antibody detects Twist1/2 protein at nucleus on rat fore brain by immunohistochemical analysis.
Sample: Paraffin-embedded rat fore brain. Twist1/2 antibody (GRP518) dilution: 1:500.