

## Product Datasheet

### HIF1 alpha antibody GRP65

#### Description

Hypoxia-inducible factor-1 (HIF1) is a transcription factor found in mammalian cells cultured under reduced oxygen tension that plays an essential role in cellular and systemic homeostatic responses to hypoxia. HIF1 is a heterodimer composed of an alpha subunit and a beta subunit. The beta subunit has been identified as the aryl hydrocarbon receptor nuclear translocator (ARNT). This gene encodes the alpha subunit of HIF-1. Overexpression of a natural antisense transcript (aHIF) of this gene has been shown to be associated with nonpapillary renal carcinomas. Two alternative transcripts encoding different isoforms have been identified. [provided by RefSeq]

#### Species/Host

Rabbit

#### Reactivity

Human, Mouse, Rat, Bovine, Rabbit

#### Conjugation

Unconjugated

#### Tested Applications

ChIP, ICC, IF, IHC-Fr, IHC-P, IP, WB

#### Immunogen

Recombinant protein encompassing a sequence within the C-terminus region of human HIF1 alpha. The exact sequence is proprietary.

#### Form/Appearance

Liquid: 1XPBS, 1% BSA, 20% Glycerol (pH7). 0.025% ProClin 300 was added as a preservative.

#### Concentration

0.26 mg/ml

#### Storage

Store as concentrated solution. Centrifuge briefly prior to opening vial. For short-term storage (1-2 weeks), store at 4°C. For long-term storage, aliquot and store at -20°C or below. Avoid multiple freeze-thaw cycles.

#### Note

For research use only.

#### Isotype

IgG

#### Clonality

Polyclonal

#### Purity

Purified by antigen-affinity chromatography.

#### Uniprot ID

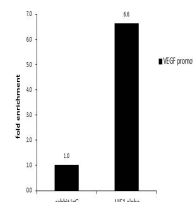
**Q16665**

#### Entrez

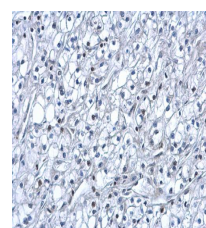
**3091**

#### Dilution Range

WB: 1:500-1:3000, ICC: 1:100-1:1000, IHC-P: 1:100-1:1000, IP: 1:100-1:570



ChIP was performed with HepG2 chromatin extract and 5 µg of either normal rabbit IgG or anti-HIF1 alpha antibody. The precipitated DNA was detected by PCR with primer set targeting to VEGF promoter.



HIF1 alpha antibody detects HIF1 alpha protein at nucleus on human kidney cancer by immunohistochemical analysis. Sample: Paraffin-embedded human kidney cancer. HIF1 alpha antibody (GRP517) dilution: 1:500.