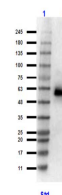


Product Datasheet

HSF1 (RABBIT) Antibody GRP3774

| | |
|----------------------------|--|
| Description | Anti-HSF1 (RABBIT) Antibody |
| Species/Host | Rabbit |
| Reactivity | Human |
| Conjugation | Unconjugated |
| Tested Applications | ELISA, WB |
| Form/Appearance | 0.02 M Potassium Phosphate, 0.15 M Sodium Chloride, pH 7.2 |
| Concentration | 1.0mg/mL |
| Note | For research use only. |
| Isotype | IgG |
| Clonality | Polyclonal |
| Source | Affinity purified Anti-HSF1 antibody was prepared from whole rabbit serum produced by repeated immunizations with a synthetic peptide near the n-terminal portion of human HSF1 protein. |
| Uniprot ID | Q00613 |
| Entrez | https://www.ncbi.nlm.nih.gov/gene//3297 |
| Dilution Range | ELISA: 1:50,000, Western Blot: 1 ug/ml |



Western blot of Anti-HSF1
(RABBIT) Antibody