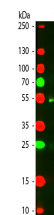


Product Datasheet

HORSE IgG (H&L) (RABBIT) Antibody Conjugated GRP4477

Description	Anti-HORSE IgG (H&L) (RABBIT) Antibody Conjugated
Species/Host	Rabbit
Conjugation	Texas Red
Tested Applications	FC, IF, IHC-P
Form/Appearance	0.02 M Potassium Phosphate, 0.15 M Sodium Chloride, pH 7.2
Concentration	2.0 mg/mL
Note	For research use only.
Isotype	IgG
Clonality	Polyclonal
Purity	This product was prepared from monospecific antiserum by immunoaffinity chromatography using Horse IgG coupled to agarose beads. Assay by immunoelectrophoresis resulted in a single precipitin arc against anti-Rabbit Serum, Horse IgG and Horse Serum.
Source	Horse IgG whole molecule
Dilution Range	FLISA: 1:10,000 - 1:50,000, Flow Cytometry: 1:500 - 1:2,500, Fluorochrome: 1.7, IF Microscopy: 1:1,000 - 1:5,000



WB - Horse IgG (H&L)
Antibody
Texas Red™ Conjugated