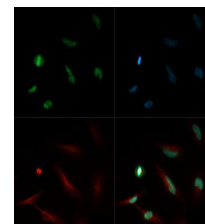


Product Datasheet

Histone H4 [Monomethyl Lys20] (RABBIT) Antibody GRP3854

Description	Anti-Histone H4 [Monomethyl Lys20] (RABBIT) Antibody
Species/Host	Rabbit
Reactivity	Human, Mouse, C. Elegans
Conjugation	Unconjugated
Tested Applications	ChIP, IF, IHC-P, WB
Form/Appearance	0.02 M Potassium Phosphate, 0.15 M Sodium Chloride, pH 7.2
Concentration	1.12 mg/ml
Note	For research use only.
Isotype	IgG
Clonality	Polyclonal
Source	Histone H4 [Monomethyl Lys20] affinity purified antibody was prepared from whole rabbit serum produced by repeated immunizations with a synthetic monomethylated peptide surrounding Lysine 20 of human Histone H4.
Uniprot ID	P62805
Entrez	https://www.ncbi.nlm.nih.gov/gene/121504
Dilution Range	ChIP: 2-5µg /million cells, Immunocytochemistry: 1:50, IF Microscopy: 1:50, Western Blot: 1:500



Histone H4 [Monomethyl Lys20]
Immunofluorescence