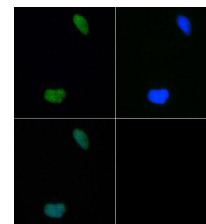


## Product Datasheet

### Histone H4 [Dimethyl Lys20] (RABBIT) Antibody GRP3855

<b>Description</b>	Anti-Histone H4 [Dimethyl Lys20] (RABBIT) Antibody
<b>Species/Host</b>	Rabbit
<b>Reactivity</b>	Human, C. Elegans
<b>Conjugation</b>	Unconjugated
<b>Tested Applications</b>	ChIP, IF, IHC-P, WB
<b>Form/Appearance</b>	0.02 M Potassium Phosphate, 0.15 M Sodium Chloride, pH 7.2
<b>Concentration</b>	0.53 mg/ml
<b>Note</b>	For research use only.
<b>Isotype</b>	IgG
<b>Clonality</b>	Polyclonal
<b>Source</b>	Histone H4 [Dimethyl Lys20] affinity purified antibody was prepared from whole rabbit serum produced by repeated immunizations with a synthetic dimethylated peptide surrounding Lysine 20 of human Histone H4.
<b>Uniprot ID</b>	<b>P62805</b>
<b>Entrez</b>	<a href="https://www.ncbi.nlm.nih.gov/gene/121504">https://www.ncbi.nlm.nih.gov/gene/121504</a>
<b>Dilution Range</b>	ChIP: 2-5µg /million cells, Immunocytochemistry: 1:50, IF Microscopy: 1:50, Western Blot: 1:2000



Histone H4 [Dimethyl Lys20]  
Immunofluorescence