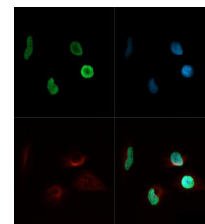


Product Datasheet

Histone H4 [ac Lys8] (RABBIT) Antibody GRP3852

Description	Anti-Histone H4 [ac Lys8] (RABBIT) Antibody
Species/Host	Rabbit
Reactivity	Human, Mouse, C. Elegans
Conjugation	Unconjugated
Tested Applications	ChIP, IF, IHC-P, WB
Form/Appearance	0.02 M Potassium Phosphate, 0.15 M Sodium Chloride, pH 7.2
Concentration	0.85 mg/ml
Note	For research use only.
Isotype	IgG
Clonality	Polyclonal
Source	Histone H4 [ac Lys8] affinity purified antibody was prepared from whole rabbit serum produced by repeated immunizations with a synthetic acetylated peptide surrounding Lysine 8 of human Histone H4.
Uniprot ID	P62805
Entrez	https://www.ncbi.nlm.nih.gov/gene/121504
Dilution Range	ChIP: 2-5µg /million cells, Immunocytochemistry: 1:1000-1:2000, IF Microscopy: 1:1000-1:2000, Western Blot: 0.2µg /mL



Histone H4 [ac Lys8]
Immunofluorescence