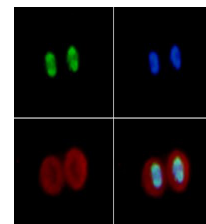


Product Datasheet

Histone H4 [ac Lys16] (RABBIT) Antibody GRP3853

Description	Anti-Histone H4 [ac Lys16] (RABBIT) Antibody
Species/Host	Rabbit
Reactivity	Human, Mouse
Conjugation	Unconjugated
Tested Applications	ChIP, IF, IHC-P, WB
Form/Appearance	0.02 M Potassium Phosphate, 0.15 M Sodium Chloride, pH 7.2
Concentration	1.0 mg/ml
Note	For research use only.
Isotype	IgG
Clonality	Polyclonal
Source	Histone H4 [ac Lys16] affinity purified antibody was prepared from whole rabbit serum produced by repeated immunizations with a synthetic acetylated peptide surrounding Lysine 16 of human Histone H4.
Uniprot ID	P62805
Entrez	4088
Dilution Range	ChIP: not recommended, Immunocytochemistry: 1:100, IF Microscopy: 1:100, Western Blot: 1:1000



Histone H4 [ac Lys16]
Immunofluorescence