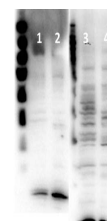


Product Datasheet

Histone H4 (RABBIT) Antibody GRP1578

Species/Host	Rabbit
Reactivity	Human
Conjugation	Unconjugated
Tested Applications	ELISA, WB
Form/Appearance	0.02 M Potassium Phosphate, 0.15 M Sodium Chloride, pH 7.2
Concentration	90 mg/mL
Note	For research use only.
Isotype	Antiserum
Clonality	Polyclonal
Purity	Anti-Histone H4 pan Antibody antiserum is directed against Histone H4. Cross reactivity with other species was not tested.
Source	Anti-Histone H4 pan Antibody was produced in rabbits by repeated immunizations with a synthetic peptide containing a sequence from the N-terminal region of histone H4.
Uniprot ID	P62805
Entrez	2064
Dilution Range	ELISA: 1:20000, Western Blot: 1:500-1:2000



Western Blot of Rabbit anti-Histone H4 antibody.