

Product Datasheet

Histone H3 [p Thr6, Monomethyl Lys9] (RABBIT) Antibody GRP3817

Description Anti-Histone H3 [p Thr6, Monomethyl Lys9] (RABBIT) Antibody

Species/Host Rabbit

Reactivity Human, Mouse, C. Elegans

Conjugation Unconjugated

Tested Applications ChIP, IF, IHC-P, WB

Form/Appearance 0.02 M Potassium Phosphate, 0.15 M Sodium Chloride, pH 7.2

Concentration 0.85 mg/ml

Note For research use only.

Isotype IgG

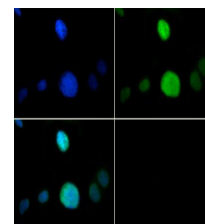
Clonality Polyclonal

Source Histone H3 [p Thr6, Monomethyl Lys9] affinity purified antibody was prepared from whole rabbit serum produced by repeated immunizations with a synthetic monomethylated/phosphorylated peptide surrounding Lysine 9/Threonine 6 of human Histone H3.2.

Uniprot ID [Q71DI3](#)

Entrez [11473645](#)

Dilution Range ChIP: 2-5µg /million cells,Immunochemistry: 1:200,IF Microscopy: 1:200,Western Blot: 1:500-1:1000



Histone H3 [Monomethyl
Lys9, p
Thr6] Immunofluorescence