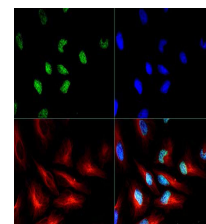


## Product Datasheet

### Histone H3 [p Thr3, Sym-dimethyl Arg2] (RABBIT) Antibody GRP3963

<b>Description</b>	Anti-Histone H3 [p Thr3, Sym-dimethyl Arg2] (RABBIT) Antibody
<b>Species/Host</b>	Rabbit
<b>Reactivity</b>	Human, Mouse, Monkey
<b>Conjugation</b>	Unconjugated
<b>Tested Applications</b>	IF, WB
<b>Form/Appearance</b>	0.02 M Potassium Phosphate, 0.15 M Sodium Chloride, pH 7.2
<b>Concentration</b>	0.21 mg/mL
<b>Note</b>	For research use only.
<b>Isotype</b>	IgG
<b>Clonality</b>	Polyclonal
<b>Source</b>	Histone H3 pT3/R2Me2s affinity purified antibody was prepared from whole rabbit serum produced by repeated immunizations with a synthetic peptide surrounding the pT3 and R2Me2s site of human Histone H3.
<b>Uniprot ID</b>	<b>Q71DI3</b>
<b>Entrez</b>	<b>7422</b>
<b>Dilution Range</b>	IF Microscopy: 1:50-1:100, Western Blot: 1 µg /mL



Immunofluorescence of  
Rabbit  
Histone H3 pT3/R2Me2s