

## Product Datasheet

### Histone H3 [p Thr3, Monomethyl Lys4] (RABBIT) Antibody GRP3807

**Description** Anti-Histone H3 [p Thr3, Monomethyl Lys4] (RABBIT) Antibody

**Species/Host** Rabbit

**Reactivity** Human, Mouse, C. Elegans

**Conjugation** Unconjugated

**Tested Applications** IF, IHC-P, WB

**Form/Appearance** 0.02 M Potassium Phosphate, 0.15 M Sodium Chloride, pH 7.2

**Concentration** 0.98 mg/mL

**Note** For research use only.

**Isotype** IgG

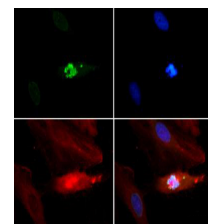
**Clonality** Polyclonal

**Source** Histone H3 [p Thr3, Monomethyl Lys4] affinity purified antibody was prepared from whole rabbit serum produced by repeated immunizations with a synthetic monomethylated/phosphorylated peptides surrounding Lysine 4 and Threonine 3 of human Histone H3.2.

**Uniprot ID** [Q71DI3](#)

**Entrez** [7422](#)

**Dilution Range** Immunochemistry: 1:100, IF Microscopy: 1:100, Western Blot: 1:1000



Histone H3 [p Thr3, Monomethyl Lys4]  
Immunofluorescence