

Product Datasheet

TET1 antibody [N3C1] GRP63

Description

Dioxygenase that specifically binds methylcytosine (5mC), a minor base in mammalian DNA found in repetitive DNA elements that is crucial for retrotransposon silencing and mammalian development. Catalyzes the conversion of methylcytosine (5mC) to 5-hydroxymethylcytosine (hmC). The clear function of 5-hydroxymethylcytosine (hmC) is still unclear but it may influence chromatin structure and recruit specific factors or may constitute an intermediate component in cytosine demethylation. 5-hydroxymethylcytosine (hmC) is present in ES cells and is enriched in the brain, especially in Purkinje neurons. May play a role in the fetal development of heart, lung and brain.

Species/Host

Rabbit

Reactivity

Human, Mouse, Monkey

Conjugation

Unconjugated

Tested Applications

ChIP, ICC, IF, IHC-P, IP, WB

Immunogen

Recombinant protein encompassing a sequence within the center region of human TET1. The exact sequence is proprietary.

Form/Appearance

Liquid: 1XPBS, 20% Glycerol (pH7). 0.025% ProClin 300 was added as a preservative.

Concentration

3.66 mg/ml

Storage

Store as concentrated solution. Centrifuge briefly prior to opening vial. For short-term storage (1-2 weeks), store at 4°C. For long-term storage, aliquot and store at -20°C or below. Avoid multiple freeze-thaw cycles.

Note

For research use only.

Isotype

IgG

Clonality

Polyclonal

Purity

Purified by antigen-affinity chromatography.

Uniprot ID

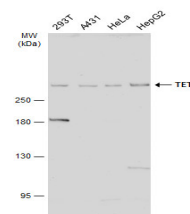
Q8NFU7

Entrez

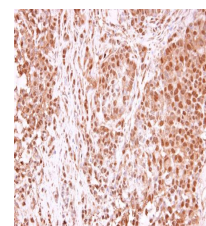
80312

Dilution Range

WB: 1:500-1:3000, ICC: 1:100-1:1000, IHC-P: 1:100-1:1000



Various whole cell extracts (30 µg) were separated by 5% SDS-PAGE, and the membrane was blotted with TET1 antibody [N3C1] (GRP515) diluted at 1:2000. The HRP-conjugated anti-rabbit IgG antibody was used to detect the primary antibody.



TET1 antibody [N3C1] detects TET1 protein at nucleus in human A549 xenograft by immunohistochemical analysis. Sample: Paraffin-embedded human A549 xenograft. TET1 antibody [N3C1] (GRP515) diluted at 1:250.