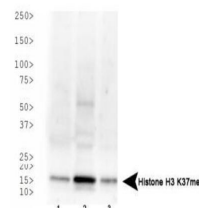


Product Datasheet

Histone H3 [Monomethyl Lys37] (RABBIT) Antibody GRP3843

Description	Anti-Histone H3 [Monomethyl Lys37] (RABBIT) Antibody
Species/Host	Rabbit
Reactivity	Human, Mouse, C. Elegans
Conjugation	Unconjugated
Tested Applications	ChIP, IF, IHC-P, WB
Form/Appearance	0.02 M Potassium Phosphate, 0.15 M Sodium Chloride, pH 7.2
Concentration	1.0 mg/mL
Note	For research use only.
Isotype	IgG
Clonality	Polyclonal
Source	Histone H3 [Monomethyl Lys37] affinity purified antibody was prepared from whole rabbit serum produced by repeated immunizations with a synthetic methylated peptide surrounding Lysine 37 of human Histone H3.
Uniprot ID	Q71DI3
Entrez	55616
Dilution Range	ChIP: not recommended, Immunocytochemistry: not recommended, IF Microscopy: 1:200, Western Blot: 1 µg /mL



Histone H3 [Monomethyl Lys37] Western Blot