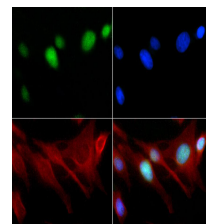


## Product Datasheet

### Histone H3 [Monomethyl Lys18] (RABBIT) Antibody GRP3831

<b>Description</b>	Anti-Histone H3 [Monomethyl Lys18] (RABBIT) Antibody
<b>Species/Host</b>	Rabbit
<b>Reactivity</b>	Human, Mouse
<b>Conjugation</b>	Unconjugated
<b>Tested Applications</b>	ChIP, IF, IHC-P, WB
<b>Form/Appearance</b>	0.02 M Potassium Phosphate, 0.15 M Sodium Chloride, pH 7.2
<b>Concentration</b>	0.64 mg/ml
<b>Note</b>	For research use only.
<b>Isotype</b>	IgG
<b>Clonality</b>	Polyclonal
<b>Source</b>	Histone H3 [Monomethyl Lys18] affinity purified antibody was prepared from whole rabbit serum produced by repeated immunizations with a synthetic monomethylated peptide surrounding Lysine 18 of human Histone H3.2.
<b>Uniprot ID</b>	<b>Q71DI3</b>
<b>Entrez</b>	<b>11274</b>
<b>Dilution Range</b>	ChIP: 2-5µg /million cells,Immunochemistry: 1:100,IF Microscopy: 1:100,Western Blot: 1:500



Histone H3 [Monomethyl Lys18]  
Immunofluorescence