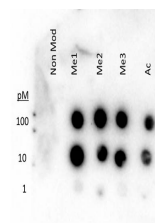


## Product Datasheet

### Histone H3 [methyl Lys27] (RABBIT) Antibody GRP2398

<b>Description</b>	Anti-Histone H3 [methyl Lys27] (RABBIT) Antibody
<b>Species/Host</b>	Rabbit
<b>Reactivity</b>	Human
<b>Conjugation</b>	Unconjugated
<b>Tested Applications</b>	WB
<b>Form/Appearance</b>	0.02 M Potassium Phosphate, 0.15 M Sodium Chloride, pH 7.2
<b>Concentration</b>	0.99 mg/mL
<b>Note</b>	For research use only.
<b>Isotype</b>	IgG
<b>Clonality</b>	Polyclonal
<b>Source</b>	Histone H3 K27 methyl Antibody was prepared from whole rabbit serum produced by repeated immunizations with a synthetic peptide surrounding the K27 me3 site of human Histone H3.
<b>Uniprot ID</b>	<a href="#">Q71DI3</a>
<b>Entrez</b>	<a href="#">51465</a>
<b>Dilution Range</b>	Western Blot: 1:1000
<b>Application Notes</b>	Anti-Histone H3 K27 Methyl Antibody is useful for ELISA and Western Blot. Specific conditions for reactivity should be optimized by the end user. Expect a band approximately ~15.4kDa corresponding to the appropriate cell lysate or extract.



Histone H3 K27 me1-3 ac  
Antibody