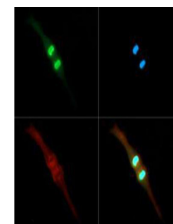


## Product Datasheet

### Histone H3 [Dimethyl Lys4, p Thr3] (RABBIT) Antibody GRP3808

<b>Description</b>	Anti-Histone H3 [Dimethyl Lys4, p Thr3] (RABBIT) Antibody
<b>Species/Host</b>	Rabbit
<b>Reactivity</b>	Human, Mouse
<b>Conjugation</b>	Unconjugated
<b>Tested Applications</b>	ChIP, IF, IHC-P, WB
<b>Form/Appearance</b>	0.02 M Potassium Phosphate, 0.15 M Sodium Chloride, pH 7.2
<b>Concentration</b>	0.83 mg/ml
<b>Note</b>	For research use only.
<b>Isotype</b>	IgG
<b>Clonality</b>	Polyclonal
<b>Source</b>	Histone H3 [Dimethyl Lys4, p Thr3] affinity purified antibody was prepared from whole rabbit serum produced by repeated immunizations with synthetic dimethylated/phosphorylated peptides surrounding Lysine 4 and Threonine 3 of human Histone H3.2.
<b>Uniprot ID</b>	<b>Q71DI3</b>
<b>Entrez</b>	<b>7334</b>
<b>Dilution Range</b>	ChIP: 2-5µg /million cells,Immunochemistry: 1:50,IF Microscopy: 1:50,Western Blot: 1:500



Histone H3 [p Thr3, Dimethyl Lys4] Immunofluorescence