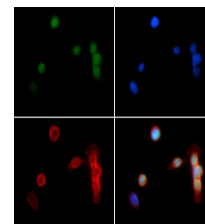


Product Datasheet

Histone H3 [Dimethyl Lys18] (RABBIT) Antibody GRP3832

Description	Anti-Histone H3 [Dimethyl Lys18] (RABBIT) Antibody
Species/Host	Rabbit
Reactivity	Human, Mouse, C. Elegans
Conjugation	Unconjugated
Tested Applications	ChIP, IF, IHC-P, WB
Form/Appearance	0.02 M Potassium Phosphate, 0.15 M Sodium Chloride, pH 7.2
Concentration	0.79 mg/ml
Note	For research use only.
Isotype	IgG
Clonality	Polyclonal
Source	Histone H3 [Dimethyl Lys18] affinity purified antibody was prepared from whole rabbit serum produced by repeated immunizations with a synthetic dimethylated peptide surrounding Lysine 18 of human Histone H3.2.
Uniprot ID	Q71DI3
Entrez	85480
Dilution Range	ChIP: 2-5µg /million cells,Immunochemistry: 1:50,IF Microscopy: 1:50,Western Blot: 1:500



Histone H3 [Dimethyl Lys18]
Immunofluorescence