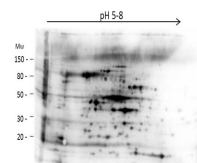


## Product Datasheet

# High Molecular Weight E.Coli Protein Host Cell Protein (HCP) Antibody GRP2392

<b>Description</b>	Anti-High Molecular Weight E.Coli Protein Host Cell Protein (HCP) Antibody
<b>Species/Host</b>	Rabbit
<b>Reactivity</b>	E.Coli
<b>Conjugation</b>	Unconjugated
<b>Tested Applications</b>	ELISA, WB
<b>Form/Appearance</b>	0.02 M Potassium Phosphate, 0.15 M Sodium Chloride, pH 7.2
<b>Concentration</b>	1.38 mg/ml
<b>Note</b>	For research use only.
<b>Isotype</b>	IgG
<b>Clonality</b>	Polyclonal
<b>Purity</b>	HMW Host Cell Protein A purified antibody is directed against high molecular weight E.coli Host Cell Proteins. The product was purified from monospecific antiserum by Protein A affinity chromatography.
<b>Source</b>	Anti-HMW E.Coli Host Cell Proteins Antibody was prepared by repeated immunizations with a mixture high molecular weight (HMW) proteins from E.Coli (BL21).
<b>Entrez</b>	<b>547831</b>
<b>Dilution Range</b>	ELISA: 1:1000-1:2000, Western Blot: 1:500 - 1:1000
<b>Application Notes</b>	Anti-HMW Host Cell Proteins Antibody detects over 250 E.coli HMW proteins and is suitable for western blotting and ELISA.



2D Western Blot of anti-E.coli High Molecular Weight Host Cell Protein antibody.