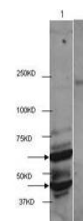


Product Datasheet

HDAC2 (RABBIT) Antibody GRP3865

| | |
|----------------------------|------------------------------|
| Description | Anti-HDAC2 (RABBIT) Antibody |
| Species/Host | Rabbit |
| Reactivity | Human, Mouse, Rat, Primate |
| Conjugation | Unconjugated |
| Tested Applications | ELISA, IF, IHC-P, WB |



Western Blot - Anti-HDAC2

| | |
|--------------------------|--|
| Form/Appearance | 0.02 M Potassium Phosphate, 0.15 M Sodium Chloride, pH 7.2 |
| Concentration | 1.0mg/mL |
| Note | For research use only. |
| Isotype | IgG |
| Clonality | Polyclonal |
| Source | HDAC2 affinity purified antibody was prepared from whole rabbit serum produced by repeated immunizations with a synthetic peptide corresponding to the near C-terminal region of human HDAC2. |
| Uniprot ID | Q92769 |
| Entrez | 1061100 |
| Dilution Range | ELISA: 1:20,000 - 1:60,000, Immunochemistry: 1:100-1:500, IF Microscopy: 1:100-1:500, Western Blot: 1 µg /ml |
| Application Notes | Anti-HDAC2 antibody is useful for ELISA and Western Blot. Specific conditions for reactivity should be optimized by the end user. Expect a band approximately ~59 kDa corresponding to the appropriate cell lysate or extract. |