

## Product Datasheet

### HbS (MOUSE) Monoclonal Antibody GRP2149

**Description** Anti-HbS (MOUSE) Monoclonal Antibody

**Species/Host** Mouse

**Conjugation** Unconjugated

**Tested Applications** ELISA, WB

**Form/Appearance** 0.02 M Potassium Phosphate, 0.15 M Sodium Chloride, pH 7.2

**Concentration** 1.0mg/ml

**Note** For research use only.

**Clonality** Monoclonal

**Source** Anti-Hemoglobin beta S Monoclonal Antibody was produced in mice by repeated immunizations with synthetic peptide corresponding to amino acid residues near the N-terminus of Hb  $\beta$ -subunit conjugated to KLH.

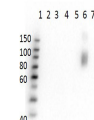
**Clone ID** 23E5.H6.G6.C1.H7.F7.G9.F6

**Uniprot ID** [P68871](#)

**Entrez** [396668](#)

**Dilution Range** ELISA: 1:20,000, Western Blot: 1ug/mL

**Application Notes** Anti-Hemoglobin beta S (MOUSE) antibody is suitable for use in Western Blotting. Specific conditions of reactivity should be optimized by the end user. Expect a band of approximately 16 kDa in appropriate lysates.



Western Blot of Anti-HbS Antibody