

Product Datasheet

HbS (MOUSE) Monoclonal Antibody GRP2148

Description Anti-HbS (MOUSE) Monoclonal Antibody

Species/Host Mouse

Conjugation Unconjugated

Tested Applications ELISA, WB

Form/Appearance 0.02 M Potassium Phosphate, 0.15 M Sodium Chloride, pH 7.2

Concentration 1.00 mg/ml

Storage Store vial at -20 °C prior to opening. This product is stable at 4 °C as an undiluted liquid. For extended storage, aliquot contents and freeze at -20 °C or below. Avoid cycles of freezing and thawing. Dilute only prior to immediate use.

Note For research use only.

Clonality Monoclonal

Source Anti-Hemoglobin beta S Monoclonal Antibody was produced in mice by repeated immunizations with synthetic peptide corresponding to amino acid residues near the N-terminus of Hb β -subunit conjugated to KLH.

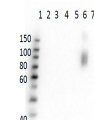
Clone ID 23E5.H6.G6.C1.H7.F7.G9.F6

Uniprot ID **P68871**

Entrez **396668**

Dilution Range ELISA: 1:20,000, Western Blot: 1ug/mL

Application Notes Anti-Hemoglobin beta S (MOUSE) antibody is suitable for use in Western Blotting. Specific conditions of reactivity should be optimized by the end user. Expect a band of approximately 16 kDa in appropriate lysates.



Western Blot of Anti-HbS Antibody