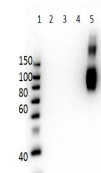


Product Datasheet

HbF (MOUSE) Monoclonal Antibody GRP2151

Description	Anti-HbF (MOUSE) Monoclonal Antibody
Species/Host	Mouse
Conjugation	Unconjugated
Tested Applications	ELISA, WB
Form/Appearance	0.02 M Potassium Phosphate, 0.15 M Sodium Chloride, pH 7.2
Concentration	1.0mg/ml
Note	For research use only.
Clonality	Monoclonal
Purity	This protein A purified mouse monoclonal antibody reacts specifically with human HbF gamma isoform. Anti-HbF is purified from tissue culture supernatant by protein A purification. This antibody does not react with the HbA, HbS, HbC, or HbA-2 isoforms.
Source	Anti-Hemoglobin beta F Monoclonal Antibody was produced in mice by repeated immunizations with synthetic peptide corresponding to amino acid residues near the N-terminus of Hb β -subunit conjugated to KLH.
Clone ID	4B3.B5.F3.B7
Uniprot ID	P69891
Entrez	445459
Dilution Range	ELISA: 1:20,000, Western Blot: 1ug/mL
Application Notes	Anti-Hemoglobin beta F (MOUSE) antibody is suitable for use in Western Blotting. Specific conditions of reactivity should be optimized by the end user. Expect a band of approximately 16 kDa.



Western Blot of Anti-HbF Antibody