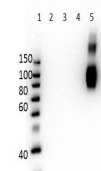


## Product Datasheet

### HbF (MOUSE) Monoclonal Antibody GRP2150

<b>Description</b>	Anti-HbF (MOUSE) Monoclonal Antibody
<b>Species/Host</b>	Mouse
<b>Conjugation</b>	Unconjugated
<b>Tested Applications</b>	ELISA, WB
<b>Form/Appearance</b>	0.02 M Potassium Phosphate, 0.15 M Sodium Chloride, pH 7.2
<b>Concentration</b>	1.0mg/ml
<b>Storage</b>	Store vial at -20 °C prior to opening. This product is stable at 4 °C as an undiluted liquid. For extended storage, aliquot contents and freeze at -20 °C or below. Avoid cycles of freezing and thawing. Dilute only prior to immediate use.
<b>Note</b>	For research use only.
<b>Clonality</b>	Monoclonal
<b>Purity</b>	This protein A purified mouse monoclonal antibody reacts specifically with human HbF gamma isoform. Anti-HbF is purified from tissue culture supernatant by protein A purification. This antibody does not react with the HbA, HbS, HbC, or HbA-2 isoforms.
<b>Source</b>	Anti-Hemoglobin beta F Monoclonal Antibody was produced in mice by repeated immunizations with synthetic peptide corresponding to amino acid residues near the N-terminus of Hb $\beta$ -subunit conjugated to KLH.
<b>Clone ID</b>	4B3.B5.F3.B7
<b>Uniprot ID</b>	<b>P69891</b>
<b>Entrez</b>	<b>445459</b>
<b>Dilution Range</b>	ELISA: 1:20,000, Western Blot: 1ug/mL
<b>Application Notes</b>	Anti-Hemoglobin beta F (MOUSE) antibody is suitable for use in Western Blotting. Specific conditions of reactivity should be optimized by the end user. Expect a band of approximately 16 kDa.



Western Blot of Anti-HbF Antibody