

## Product Datasheet

### HbC (MOUSE) Monoclonal Antibody GRP2153

**Description** Anti-HbC (MOUSE) Monoclonal Antibody

**Species/Host** Mouse

**Conjugation** Unconjugated

**Tested Applications** ELISA, WB

**Form/Appearance** 0.02 M Potassium Phosphate, 0.15 M Sodium Chloride, pH 7.2

**Concentration** 1.0 mg/mL

**Note** For research use only.

**Clonality** Monoclonal

**Source** Anti-Hemoglobin beta C Monoclonal Antibody was produced in mice by repeated immunizations with synthetic peptide corresponding to amino acid residues near the N-terminus of Hb  $\beta$ -subunit conjugated to KLH.

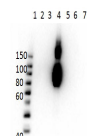
**Clone ID** 15C2.C11.F2.G11

**Uniprot ID** [P68871](#)

**Entrez** [396721](#)

**Dilution Range** ELISA: 1:20,000, Western Blot: 1  $\mu$ g/mL

**Application Notes** Anti-Hemoglobin beta C (MOUSE) antibody is suitable for use in ELISA and Western Blotting. Specific conditions of reactivity should be optimized by the end user. Expect a band of approximately 16 kDa.



Western Blot of Anti-HbC Antibody