

Product Datasheet

HbC (MOUSE) Monoclonal Antibody GRP2152

Description Anti-HbC (MOUSE) Monoclonal Antibody

Species/Host Mouse

Conjugation Unconjugated

Tested Applications ELISA, WB

Form/Appearance 0.02 M Potassium Phosphate, 0.15 M Sodium Chloride, pH 7.2

Concentration 1.00 mg/mL

Storage Store vial at -20 °C prior to opening. This product is stable at 4 °C as an undiluted liquid. For extended storage, aliquot contents and freeze at -20 °C or below. Avoid cycles of freezing and thawing. Dilute only prior to immediate use.

Note For research use only.

Clonality Monoclonal

Source Anti-Hemoglobin beta C Monoclonal Antibody was produced in mice by repeated immunizations with synthetic peptide corresponding to amino acid residues near the N-terminus of Hb β -subunit conjugated to KLH.

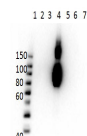
Clone ID 15C2.C11.F2.G11

Uniprot ID [P68871](#)

Entrez [396721](#)

Dilution Range ELISA: 1:20,000, Western Blot: 1 μ g/mL

Application Notes Anti-Hemoglobin beta C (MOUSE) antibody is suitable for use in ELISA and Western Blotting. Specific conditions of reactivity should be optimized by the end user. Expect a band of approximately 16 kDa.



Western Blot of Anti-HbC Antibody