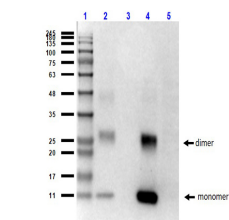


Product Datasheet

HbA (MOUSE) Monoclonal Antibody GRP2146

Description	Anti-HbA (MOUSE) Monoclonal Antibody
Species/Host	Mouse
Conjugation	Unconjugated
Tested Applications	ELISA, WB
Form/Appearance	0.02 M Potassium Phosphate, 0.15 M Sodium Chloride, pH 7.2
Concentration	1.0 mg/ml
Storage	Store vial at -20 °C prior to opening. This product is stable at 4 °C as an undiluted liquid. For extended storage, aliquot contents and freeze at -20 °C or below. Avoid cycles of freezing and thawing. Dilute only prior to immediate use.
Note	For research use only.
Clonality	Monoclonal
Source	Anti-Hemoglobin A (beta chain) Monoclonal Antibody was produced in mice by repeated immunizations with synthetic peptide corresponding to amino acid residues near the N-terminus of Hb β -subunit conjugated to KLH.
Clone ID	14G2.G11.F11
Uniprot ID	P68871
Entrez	1194336
Dilution Range	ELISA: 1:20,000, Western Blot: 1ug/mL
Application Notes	Anti-Hemoglobin A (beta chain) (MOUSE) antibody is suitable for use in Western Blotting. Specific conditions of reactivity should be optimized by the end user. Expect a band of approximately 16 kDa.



Western Blot of Mouse
Anti-HbA
Antibody