

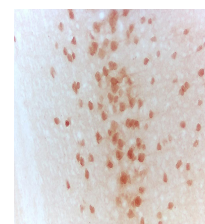
## Product Datasheet

### IKB alpha (Ser36) Polyclonal Antibody GRP621

<b>Description</b>	Inhibits the activity of dimeric NF-kappa-B/REL complexes by trapping REL dimers in the cytoplasm through masking of their nuclear localization signals. On cellular stimulation by immune and proinflammatory responses, becomes phosphorylated promoting ubiquitination and degradation, enabling the dimeric RELA to translocate to the nucleus and activate transcription.
<b>Species/Host</b>	Rabbit
<b>Reactivity</b>	Human, Mouse, Rat
<b>Conjugation</b>	Unconjugated
<b>Tested Applications</b>	IHC-P, WB
<b>Immunogen</b>	KLH conjugated synthetic peptide derived from human phospho-IKB alpha (Ser36) (public_immunogen_range: 20-50/317)
<b>Form/Appearance</b>	0.01M TBS (pH7.4) with 1% BSA, 0.03% Proclin300 and 50% Glycerol.
<b>Concentration</b>	1ug/ul
<b>Note</b>	For research use only.
<b>Isotype</b>	IgG
<b>Clonality</b>	Polyclonal
<b>Purity</b>	Purified by Protein A.
<b>Uniprot ID</b>	<b>P25963</b>
<b>Entrez</b>	<b>4792</b>
<b>Dilution Range</b>	WB: 1:300-1000, IHC-P: 1:200-400



WB of GRP621



IHC-P of GRP621