

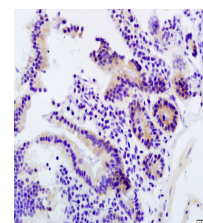
Product Datasheet

Gametogenetin Polyclonal Antibody GRP618

Description	Gametogenetin is a 652 amino acid protein that is primarily expressed in testis and ovary. Interacting with POG (proliferation of germ cells), GGNBP1 and LCRG1, gametogenetin is likely involved in spermatogenesis. Gametogenetin exists as three alternatively spliced isoforms commonly known as gametogenetin protein 1 (GGN1), gametogenetin protein 2 (GGN2) and gametogenetin protein 3 (GGN3), which localize to nuclear membrane, cytoplasm and nucleus/nucleoli, respectively. GGN1 contains two transmembrane domains in its N-terminal half and 2 C-terminal arginine- and lysine-rich nucleolar targeting sequences. GGN1 and GGN3 are likely linked to germ cell development and both GGN1 and GGN2 may be involved in cell trafficking.
Species/Host	Rabbit
Reactivity	Human, Mouse, Rat
Conjugation	Unconjugated
Tested Applications	IHC-P
Immunogen	KLH conjugated synthetic peptide derived from human GGN/Gametogenetin (public_immunogen_range: 2-25/652)
Form/Appearance	Aqueous buffered solution containing 1% BSA, 50% glycerol and 0.09% sodium azide.
Concentration	1ug/ul
Storage	Store at -20°C for 12 months.
Note	For research use only.
Isotype	IgG
Clonality	Polyclonal
Purity	Purified by Protein A.
Entrez	199720
Dilution Range	IHC-P: 1:200-400



WB of GRP618



IHC-P of GRP618