

## Product Datasheet

### FGL1 antibody GRP60

#### Description

Fibrinogen-like 1 is a member of the fibrinogen family. This protein is homologous to the carboxy terminus of the fibrinogen beta- and gamma- subunits which contains the four conserved cysteines of fibrinogens and fibrinogen related proteins. However, this protein lacks the platelet-binding site, cross-linking region and a thrombin-sensitive site which are necessary for fibrin clot formation. This protein may play a role in the development of hepatocellular carcinomas. Four alternatively spliced transcript variants encoding the same protein exist for this gene. [provided by RefSeq]

#### Species/Host

Rabbit

#### Reactivity

Human, Mouse

#### Conjugation

Unconjugated

#### Tested Applications

IHC-P, WB

#### Immunogen

Recombinant protein encompassing a sequence within the center region of human FGL1. The exact sequence is proprietary.

#### Form/Appearance

Liquid: 0.1M Tris, 0.1M Glycine, 20% Glycerol (pH7). 0.01% Thimerosal was added as a preservative.

#### Concentration

0.88 mg/ml

#### Storage

Store as concentrated solution. Centrifuge briefly prior to opening. For short-term storage (1-2 weeks), store at 4°C. For long-term storage, aliquot and store at -20°C or below. Avoid multiple freeze-thaw cycles.

#### Note

For research use only.

#### Isotype

IgG

#### Clonality

Polyclonal

#### Purity

Purified by antigen-affinity chromatography.

#### Uniprot ID

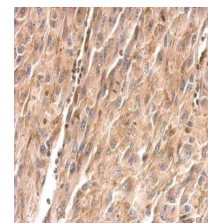
**Q08830**

#### Entrez

**2267**

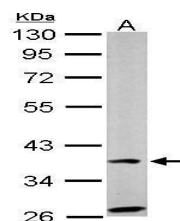
#### Dilution Range

WB: 1:500-1:3000, IHC-P: 1:100-1:1000



FGL1 antibody detects FGL1 protein at cytosol on gastric carcinoma by immunohistochemical analysis.

Sample: Paraffin-embedded U87 xenograft. FGL1 antibody (GRP512) dilution: 1:500.



Sample (50 ug of whole cell lysate) A: mouse liver 10% SDS PAGE GRP512 diluted at 1:1000