

Product Datasheet

BAMBI Polyclonal Antibody GRP616

Description

BAMBI is a membrane spanning glycoprotein that acts as a negative regulator of TGF-beta signaling during development. The BAMBI family of proteins are related to type I TGF-beta receptor family, however, BAMBI is a pseudoreceptor that lacks an intracellular serine/threonine kinase domain. BAMBI transcription regulation is under the influence of beta-catenin, BMP, smad3 and smad4. BAMBI expression can increase in colorectal and hepatocellular carcinomas relative to non-cancerous tissues. BAMBI is expressed at high levels during odontogenesis. BAMBI is coexpressed with Bmp-4 during early *Xenopus* embryogenesis and can be detected in poorly metastatic human melanoma cell lines.

Species/Host

Rabbit

Reactivity

Human, Mouse, Rat, Pig

Conjugation

Unconjugated

Tested Applications

FC, IHC-P, WB

Immunogen

KLH conjugated synthetic peptide derived from human BAMBI (public_immunogen_range: 100-150/260)

Form/Appearance

Aqueous buffered solution containing 1% BSA, 50% glycerol and 0.09% sodium azide.

Concentration

1ug/ul

Storage

Store at -20°C for 12 months.

Note

For research use only.

Isotype

IgG

Clonality

Polyclonal

Purity

Purified by Protein A.

Uniprot ID

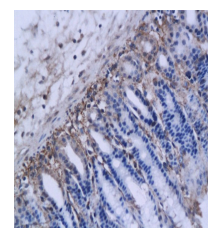
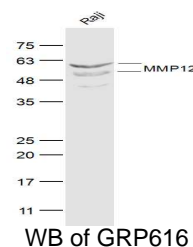
Q13145

Entrez

25805

Dilution Range

WB: 1:300-1000, FC: 1:20-100, IHC-P: 1:200-400



IHC-P of GRP616