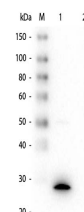


Product Datasheet

GSTZ1 (MOUSE) Monoclonal Antibody GRP2135

Description	Anti-GSTZ1 (MOUSE) Monoclonal Antibody
Species/Host	Mouse
Reactivity	Human
Conjugation	Unconjugated
Tested Applications	ELISA, IHC-P, IP, WB
Form/Appearance	0.02 M Potassium Phosphate, 0.15 M Sodium Chloride, pH 7.2
Concentration	1.0 mg/ml
Note	For research use only.
Isotype	IgG1
Clonality	Monoclonal
Purity	This product is purified from roller bottle culture by Protein A chromatography followed by extensive dialysis against the buffer stated above. Reacts specifically with Z1 protein. Cross reactivity from other sources has not been determined.
Source	This Protein A purified antibody was prepared by repeated immunizations in mice with Z1 Protein
Clone ID	24E9.G9.G8
Uniprot ID	O43708
Entrez	10586229
Dilution Range	ELISA: 1:50,000 - 1:200,000, Immunochemistry: User Optimized, Immunoprecipitation: User Optimized, Western Blot: 1:500 - 1:1000
Application Notes	This antibody is useful in ELISA and Western Blot. Suitable for most immunological techniques requiring high titer binding and lot-to-lot consistency. Specific conditions for reactivity should be optimized by the end user.



GSTZ1 Monoclonal Antibody - Western Blot