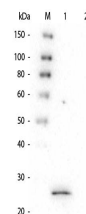


## Product Datasheet

### GSTS1 (MOUSE) Monoclonal Antibody GRP2137

<b>Description</b>	Anti-GSTS1 (MOUSE) Monoclonal Antibody
<b>Species/Host</b>	Mouse
<b>Reactivity</b>	Human
<b>Conjugation</b>	Unconjugated
<b>Tested Applications</b>	ELISA, IHC-P, IP, WB
<b>Form/Appearance</b>	0.02 M Potassium Phosphate, 0.15 M Sodium Chloride, pH 7.2
<b>Concentration</b>	1.0 mg/mL
<b>Note</b>	For research use only.
<b>Isotype</b>	IgG
<b>Clonality</b>	Monoclonal
<b>Purity</b>	This product is purified from roller bottle culture by Protein A chromatography followed by extensive dialysis against the buffer stated above. Reacts specifically with S1 protein. Cross reactivity from other sources has not been determined.
<b>Source</b>	This Protein A purified antibody was prepared by repeated immunizations in mice with S1 Protein
<b>Clone ID</b>	4D12.H7.D10.E3
<b>Entrez</b>	<b>10586229</b>
<b>Dilution Range</b>	ELISA: 1:50,000 - 1:200,000, Immunochemistry: User Optimized, Immunoprecipitation: User Optimized, Western Blot: 1:500 - 1:1000
<b>Application Notes</b>	This antibody is useful in ELISA and Western Blot. Suitable for most immunological techniques requiring high titer binding and lot-to-lot consistency. Specific conditions for reactivity should be optimized by the end user.



GSTS1 Monoclonal Antibody - Western Blot