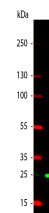


## Product Datasheet

### GST (RABBIT) Antibody Rhodamine Conjugated GRP3323

<b>Description</b>	Anti-GST (RABBIT) Antibody Rhodamine Conjugated
<b>Species/Host</b>	Rabbit
<b>Conjugation</b>	Rhodamine (TRITC)
<b>Tested Applications</b>	FC, IF, IHC-P
<b>Form/Appearance</b>	0.02 M Potassium Phosphate, 0.15 M Sodium Chloride, pH 7.2
<b>Concentration</b>	1.0 mg/mL
<b>Note</b>	For research use only.
<b>Isotype</b>	IgG
<b>Clonality</b>	Polyclonal
<b>Source</b>	The immunogen is full length GST isolated from Schistosoma japonicum.
<b>Entrez</b>	<b>528735</b>
<b>Dilution Range</b>	FLISA: User Optimized, Flow Cytometry: User Optimized, Fluorochrome: 2.4, IF Microscopy: 1:500-1:2,500
<b>Application Notes</b>	GST Antibody Rhodamine Conjugated is suitable for immunomicroscopy and flow cytometry or FACS analysis as well as other antibody based fluorescent assays requiring lot-to-lot consistency.



WB - GST Antibody Rhodamine Conjugated