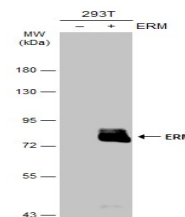


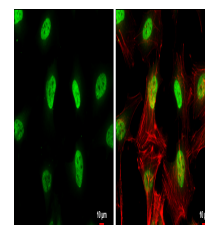
Product Datasheet

ERM antibody GRP59

Description	Binds to DNA sequences containing the consensus nucleotide core sequence GGAA.
Species/Host	Rabbit
Reactivity	Human, Mouse
Conjugation	Unconjugated
Tested Applications	ICC, IF, IHC-Fr, IHC-P, WB
Immunogen	Recombinant protein encompassing a sequence within the center region of human ERM. The exact sequence is proprietary.
Form/Appearance	Liquid: 1XPBS, 20% Glycerol (pH7). 0.025% ProClin 300 was added as a preservative.
Concentration	0.94 mg/ml
Storage	Store as concentrated solution. Centrifuge briefly prior to opening vial. For short-term storage (1-2 weeks), store at 4°C. For long-term storage, aliquot and store at -20°C or below. Avoid multiple freeze-thaw cycles.
Note	For research use only.
Isotype	IgG
Clonality	Polyclonal
Purity	Purified by antigen-affinity chromatography.
Uniprot ID	P41161
Entrez	2119
Dilution Range	WB: 1:1000-1:10000, ICC: 1:100-1:1000, IHC-P: 1:100-1:1000



Non-transfected (â€“) and transfected (+) 293T whole cell extracts (30 µg) were separated by 10% SDS-PAGE, and the membrane was blotted with ERM antibody (GRP511) diluted at 1:5000. The HRP-conjugated anti-rabbit IgG antibody was used to detect the pr



ERM antibody detects ERM protein at nucleus by immunofluorescent analysis. Sample: HeLa cells were fixed in 4% paraformaldehyde at RT for 15 min. Green: ERM protein stained by ERM antibody (GRP511) diluted at 1:500. Red: Phalloidin, a cytoskeleton marker, di