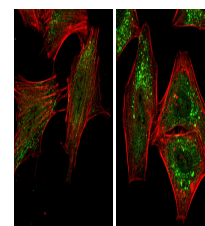


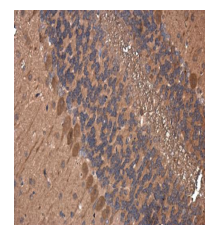
## Product Datasheet

### ATG5 antibody GRP58

<b>Description</b>	ATG5 antibody
<b>Species/Host</b>	Rabbit
<b>Reactivity</b>	Human, Mouse
<b>Conjugation</b>	Unconjugated
<b>Tested Applications</b>	ICC, IF, IHC-P, WB
<b>Immunogen</b>	Recombinant protein encompassing a sequence within the centre region of human ATG5. The exact sequence is proprietary.
<b>Form/Appearance</b>	Liquid: 0.1M Tris, 0.1M Glycine, 10% Glycerol (pH7). 0.01% Thimerosal was added as a preservative.
<b>Concentration</b>	1 mg/ml
<b>Storage</b>	Store as concentrated solution. Centrifuge briefly prior to opening vial. For short-term storage (1-2 weeks), store at 4°C. For long-term storage, aliquot and store at -20°C or below. Avoid multiple freeze-thaw cycles.
<b>Note</b>	For research use only.
<b>Isotype</b>	IgG
<b>Clonality</b>	Polyclonal
<b>Purity</b>	Purified by antigen-affinity chromatography.
<b>Uniprot ID</b>	<b>Q9H1Y0</b>
<b>Entrez</b>	<b>9474</b>
<b>Dilution Range</b>	WB: 1:500-1:3000, ICC: 1:100-1:1000, IHC-P: 1:100-1:1000



ATG5 antibody detects ATG5 protein at autophagosome by immunofluorescent analysis. Samples: HeLa cells mock (left) and treated with 50 μM Chloroquine for 24 hr (right) were fixed in 4% paraformaldehyde at RT for 15 min. Green: ATG5 protein stained by ATG5 a



ATG5 antibody detects ATG5 protein at cytoplasm in mouse brain by immunohistochemical analysis. Sample: Paraffin-embedded mouse brain. ATG5 antibody (GRP510) diluted at 1:400.