

Product Datasheet

STAT6 antibody GRP57

Description

The protein encoded by this gene is a member of the STAT family of transcription factors. In response to cytokines and growth factors, STAT family members are phosphorylated by the receptor associated kinases, and then form homo- or heterodimers that translocate to the cell nucleus where they act as transcription activators. This protein plays a central role in exerting IL4 mediated biological responses. It is found to induce the expression of BCL2L1/BCL-X(L), which is responsible for the anti-apoptotic activity of IL4. Knockout studies in mice suggested the roles of this gene in differentiation of T helper 2 (Th2) cells, expression of cell surface markers, and class switch of immunoglobulins. [provided by RefSeq]

Species/Host

Rabbit

Reactivity

Human, Mouse

Conjugation

Unconjugated

Tested Applications

ICC, IF, IHC-P, IP, WB

Immunogen

Recombinant protein encompassing a sequence within the center region of human STAT6. The exact sequence is proprietary.

Form/Appearance

Liquid: PBS

Concentration

0.59 mg/ml

Storage

Store as concentrated solution. Centrifuge briefly prior to opening vial. For short-term storage (1-2 weeks), store at 4°C. For long-term storage, aliquot and store at -20°C or below. Avoid multiple freeze-thaw cycles.

Note

For research use only.

Isotype

IgG

Clonality

Polyclonal

Purity

Purified by antigen-affinity chromatography.

Uniprot ID

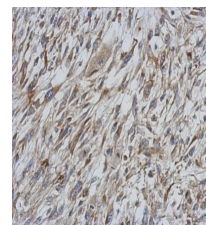
P42226

Entrez

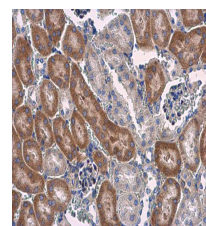
6778

Dilution Range

WB: 1:500-1:3000, IHC-P: 1:100-1:1000, IP: 1:500-1:1000



Immunohistochemical analysis of paraffin-embedded C2C12 xenograft, using STAT6 antibody (GRP509) at 1:500 dilution.



STAT6 antibody detects STAT6 protein at cytoplasm in mouse kidney by immunohistochemical analysis. Sample: Paraffin-embedded mouse kidney. STAT6 antibody (GRP509) diluted at 1:500.