

## Product Datasheet

### Biglycan Polyclonal Antibody GRP585

#### Description

The protein encoded by this gene is a small cellular or pericellular matrix proteoglycan that is closely related in structure to two other small proteoglycans, decorin and fibromodulin. The encoded protein and decorin are thought to be the result of a gene duplication. Decorin contains one attached glycosaminoglycan chain, while this protein probably contains two chains. For this reason, this protein is called biglycan. This protein plays a role in assembly of collagen fibrils and muscle regeneration. It interacts with several proteins involved in muscular dystrophy, including alpha-dystroglycan, alpha- and gamma-sarcoglycan and collagen VI, and it is critical for the assembly of the dystrophin-associated protein complex.

#### Species/Host

Rabbit

#### Reactivity

Human, Mouse, Rat, Rabbit

#### Conjugation

Unconjugated

#### Tested Applications

ICC, IF, IHC-P, WB

#### Immunogen

KLH conjugated synthetic peptide derived from human Biglycan (public\_immunogen\_range: 120-170/368)

#### Form/Appearance

Aqueous buffered solution containing 1% BSA, 50% glycerol and 0.09% sodium azide.

#### Concentration

1ug/ul

#### Storage

Store at -20°C for 12 months.

#### Note

For research use only.

#### Isotype

IgG

#### Clonality

Polyclonal

#### Purity

Purified by Protein A.

#### Uniprot ID

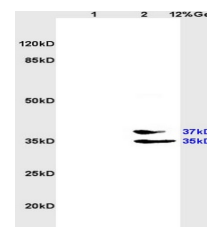
**P21810**

#### Entrez

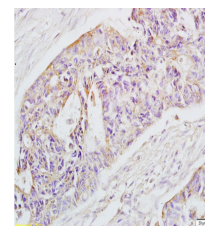
**633**

#### Dilution Range

WB: 1:300-1000, IHC-P: 1:200-400, IF: 1:50-200



WB of GRP585



IHC-P of GRP585