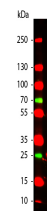


Product Datasheet

GOAT IgG (H&L) (RABBIT) Antibody GRP4287

Description	Anti-GOAT IgG (H&L) (RABBIT) Antibody
Species/Host	Rabbit
Conjugation	Unconjugated
Tested Applications	ELISA, IHC-P, WB
Form/Appearance	0.02 M Potassium Phosphate, 0.15 M Sodium Chloride, pH 7.2
Concentration	2.1 mg/mL
Note	For research use only.
Isotype	IgG
Clonality	Polyclonal
Purity	Secondary Antibody was prepared from monospecific antiserum by immunoaffinity chromatography using Goat IgG coupled to agarose beads. Assay by immunoelectrophoresis resulted in a single precipitin arc against anti-Rabbit Serum, Goat IgG and Goat Serum.
Source	Goat IgG whole molecule
Entrez	7157
Dilution Range	ELISA: 1:50,000 - 1:100,000, Immunochemistry: 1:1,000 - 1:5,000, Western Blot: 1:10,000 - 1:60,000
Application Notes	Anti-Goat IgG antibody is suitable for ELISA, western blot, and immunohistochemistry, as well as other assays requiring lot-to-lot consistency.



WB - GOAT IgG (H&L)
Secondary
Antibody