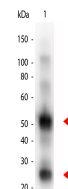


Product Datasheet

GOAT IgG (H&L) (DONKEY) Antibody GRP4334

Description	Anti-GOAT IgG (H&L) (DONKEY) Antibody
Species/Host	Donkey
Reactivity	Goat
Conjugation	Unconjugated
Tested Applications	ELISA, IHC-P, WB
Form/Appearance	0.02 M Potassium Phosphate, 0.15 M Sodium Chloride, pH 7.2
Concentration	2.0 mg/mL
Note	For research use only.
Isotype	IgG
Clonality	Polyclonal
Source	Anti-Goat IgG (H&L) was produced by repeated immunization with goat IgG whole molecule in donkey
Entrez	396058
Dilution Range	ELISA: 1:23,400-1:43,400, Immunochemistry: 1:1,000 - 1:5,000, Western Blot: 1:2,000 - 1:10,000
Application Notes	Antibody Anti-Goat IgG (H&L) is suitable for immunoblotting (western or dot blot), ELISA, immunoelectron microscopy and immunohistochemistry as well as other antibody-based enzymatic assays requiring lot-to-lot consistency.



Goat IgG (H&L) Antibody -
Western Blot