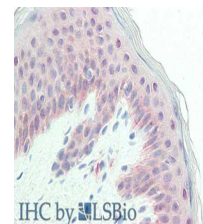


## Product Datasheet

### Glypican 1 (RABBIT) Antibody GRP2334

<b>Description</b>	Anti-Glypican 1 (RABBIT) Antibody
<b>Species/Host</b>	Rabbit
<b>Reactivity</b>	Human, Mouse, Rat
<b>Conjugation</b>	Unconjugated
<b>Tested Applications</b>	ELISA, IHC-P, WB
<b>Form/Appearance</b>	0.02 M Potassium Phosphate, 0.15 M Sodium Chloride, pH 7.2
<b>Concentration</b>	2.0 mg/mL
<b>Note</b>	For research use only.
<b>Isotype</b>	IgG
<b>Clonality</b>	Polyclonal
<b>Source</b>	Anti-Glypican-1 protein A purified antibody was prepared from whole rabbit serum produced by repeated immunizations with a synthetic peptide corresponding to an internal region of human glypican-1 protein.
<b>Uniprot ID</b>	<b>P35052</b>
<b>Entrez</b>	<b>1194357</b>
<b>Dilution Range</b>	ELISA: 1:10,000 - 1:50,000, Immunochemistry: 10µg /mL, Western Blot: 1:500- 1:2,000



Immunohistochemistry of  
Rabbit  
anti-Glypican antibody.