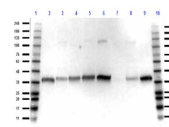


Product Datasheet

Glyceraldehyde-3-Phosphate Dehydrogenase (GAPDH) (RABBIT) Antibody GRP3770

| | |
|----------------------------|--|
| Description | Anti-Glyceraldehyde-3-Phosphate Dehydrogenase (GAPDH) (RABBIT) Antibody |
| Species/Host | Rabbit |
| Reactivity | Human, Mouse |
| Conjugation | Unconjugated |
| Tested Applications | ELISA, WB |
| Form/Appearance | 0.02 M Potassium Phosphate, 0.15 M Sodium Chloride, pH 7.2 |
| Concentration | 1.08 mg/ml |
| Note | For research use only. |
| Isotype | IgG |
| Clonality | Polyclonal |
| Source | GAPDH Antibody was prepared from whole rabbit serum produced by repeated immunizations with a synthetic peptide corresponding to a region near the N-terminus of human Glyceraldehyde-3-Phosphate Dehydrogenase (GAPDH). |
| Uniprot ID | P04406 |
| Entrez | 4800 |
| Dilution Range | ELISA: 5.0 ug/ml, Western Blot: 1 ug/ml |



Western blot of Anti-GAPDH Antibody