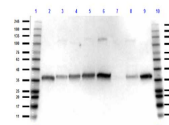


Product Datasheet

Glyceraldehyde-3-Phosphate Dehydrogenase (GAPDH) (RABBIT) Antibody GRP3769

Description	Anti-Glyceraldehyde-3-Phosphate Dehydrogenase (GAPDH) (RABBIT) Antibody
Species/Host	Rabbit
Reactivity	Human, Mouse
Conjugation	Unconjugated
Tested Applications	ELISA, WB
Form/Appearance	0.02 M Potassium Phosphate, 0.15 M Sodium Chloride, pH 7.2
Concentration	1.0 mg/ml
Note	For research use only.
Isotype	IgG
Clonality	Polyclonal
Source	GAPDH Antibody was prepared from whole rabbit serum produced by repeated immunizations with a synthetic peptide corresponding to a region near the N-terminus of human Glyceraldehyde-3-Phosphate Dehydrogenase (GAPDH).
Uniprot ID	P04406
Entrez	4800
Dilution Range	ELISA: 5.0 ug/ml, Western Blot: 1:1000



Western blot of
Anti-GAPDH
Antibody