

## Product Datasheet

### p21 Cip1 antibody GRP55

#### Description

This gene encodes a potent cyclin-dependent kinase inhibitor. The encoded protein binds to and inhibits the activity of cyclin-CDK2 or -CDK4 complexes, and thus functions as a regulator of cell cycle progression at G1. The expression of this gene is tightly controlled by the tumor suppressor protein p53, through which this protein mediates the p53-dependent cell cycle G1 phase arrest in response to a variety of stress stimuli. This protein can interact with proliferating cell nuclear antigen (PCNA), a DNA polymerase accessory factor, and plays a regulatory role in S phase DNA replication and DNA damage repair. This protein was reported to be specifically cleaved by CASP3-like caspases, which thus leads to a dramatic activation of CDK2, and may be instrumental in the execution of apoptosis following caspase activation. Two alternatively spliced variants, which encode an identical protein, have been reported. [provided by RefSeq]

#### Species/Host

Rabbit

#### Reactivity

Human, Chicken

#### Conjugation

Unconjugated

#### Tested Applications

ICC, IF, IHC-P, WB

#### Immunogen

Recombinant protein encompassing a sequence within the center region of human p21 Cip1. The exact sequence is proprietary.

#### Form/Appearance

Liquid: 1XPBS, 20% Glycerol (pH7). 0.01% Thimerosal was added as a preservative.

#### Concentration

1 mg/ml

#### Storage

Store as concentrated solution. Centrifuge briefly prior to opening vial. For short-term storage (1-2 weeks), store at 4°C. For long-term storage, aliquot and store at -20°C or below. Avoid multiple freeze-thaw cycles.

#### Note

For research use only.

#### Isotype

IgG

#### Clonality

Polyclonal

#### Purity

Purified by antigen-affinity chromatography.

#### Uniprot ID

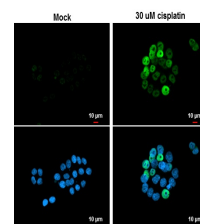
**P38936**

#### Entrez

**1026**

#### Dilution Range

WB: 1:500-1:3000, ICC: 1:100-1:1000, IHC-P: 1:100-1:1000



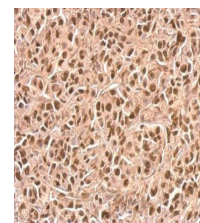
p21 Cip1 antibody detects p21

Cip1 protein at nucleus by immunofluorescent analysis.

Samples: HeLa cells mock (left) and treated with 30 μM

Cisplatin for 24 hrs (right) were fixed in 4% paraformaldehyde at RT for 15

min. Green: p21 Cip1 protein stained by



p21 Cip1 antibody detects CDKN1A protein at nucleus on SkHep1 xenograft by immunohistochemical analysis.

Sample: Paraffin-embedded SkHep1 xenograft, p21