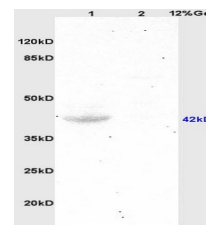


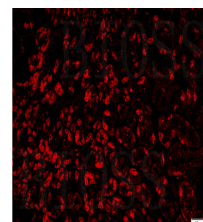
Product Datasheet

Integrin Alpha V + Beta 6 Antibody GRP567

Description	Integrins are heterodimeric cell surface receptors composed of alpha and beta subunits, which mediate cell-cell and cell-extracellular matrix attachments. Aberrant integrin expression has been found in many epithelial tumours. Changes in integrin expression have been shown to be important for the growth and early metastatic capacity of melanoma cells. Integrin alpha-v beta-6 is upregulated in cancers and during tissue remodelling but is absent from resting adult tissues. Integrin alpha-v beta-6 promotes invasion and correlates with poor survival and therefore makes a promising therapeutic target.
Species/Host	Rabbit
Reactivity	Human, Mouse, Rat
Conjugation	Unconjugated
Tested Applications	IHC-P, WB
Immunogen	KLH conjugated synthetic peptide derived from human Integrin Alpha V + Beta 6
Form/Appearance	Aqueous buffered solution containing 1% BSA, 50% glycerol and 0.09% sodium azide.
Concentration	1ug/ul
Storage	Store at -20°C for 12 months.
Note	For research use only.
Isotype	IgG
Clonality	Polyclonal
Purity	Purified by Protein A.
Entrez	3685 3694
Dilution Range	WB: 1:300-1000, IHC-P: 1:200-400



WB of GRP567



IHC-P of GRP567