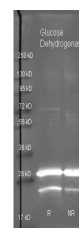


Product Datasheet

GLUCOSE DEHYDROGENASE (GOAT) Antibody Peroxidase Conjugated GRP1900

Description	Glucose Dehydrogenase belongs to the family of oxidoreductases, specifically those acting on the CH-OH group of donor with NAD ⁺ or NADP ⁺ as acceptor.
Species/Host	Goat
Reactivity	Bacteria
Conjugation	HRP
Tested Applications	ELISA, WB
Form/Appearance	0.02 M Potassium Phosphate, 0.15 M Sodium Chloride, pH 7.2
Concentration	1 mg/mL
Note	For research use only.
Isotype	IgG
Clonality	Polyclonal
Source	Glucose Dehydrogenase [Bacillus]
Uniprot ID	P07999
Entrez	9518
Dilution Range	ELISA: 1:10,000 - 1:40,000, Western Blot: 1:1,000 - 1:5,000



Glucose Dehydrogenase
Polyclonal
Antibody-Western
blot