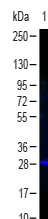


## Product Datasheet

### GFP (RABBIT) Antibody Fluorescein Conjugated GRP3975

<b>Description</b>	Anti-GFP (RABBIT) Antibody Fluorescein Conjugated
<b>Species/Host</b>	Rabbit
<b>Reactivity</b>	Other
<b>Conjugation</b>	FITC
<b>Tested Applications</b>	ELISA, FC, IF, WB
<b>Form/Appearance</b>	0.02 M Potassium Phosphate, 0.15 M Sodium Chloride, pH 7.2
<b>Concentration</b>	1.0 mg/mL
<b>Note</b>	For research use only.
<b>Isotype</b>	IgG
<b>Clonality</b>	Polyclonal
<b>Source</b>	Anti-Green Fluorescent Protein (GFP) is produced by immunizing GFP containing fusion protein that corresponds to the full length amino acid sequence (246aa) derived from the jellyfish <i>Aequorea victoria</i> .
<b>Entrez</b>	<b>7614553</b>
<b>Dilution Range</b>	ELISA: 1:20,000-1:40,000, Flow Cytometry: 1:2000, Fluorochrome: 7.2, IF Microscopy: 1:500 - 1:2,500, Western Blot: 1:10,000-1:25,000
<b>Application Notes</b>	Suitable for immunomicroscopy and flow cytometry or FACS analysis as well as other antibody based fluorescent assays requiring lot-to-lot consistency.



GFP Antibody Fluorescein Conjugated Western Blot